

BIN VENT FILTER

CYLINDRICAL



CONTROL DUST. RECOVER PRODUCT. MANAGE EMISSIONS.

The cylindrical bin vent filter from Carmeuse Systems is designed to vent displaced air from smaller storage hoppers or scaling bins that are gravity fed by screws, conveyors, or other equipment, where dust particles must be contained or controlled. While venting displaced air, it also prevents dust particles and other harmful products from being emitted into the atmosphere or surrounding environment. The single filter bag media captures the dust particulates in the displaced air while discharging cleaned air to the environment. A reverse pulse jet is activated sequentially to clean material off the filter using compressed air and blow the collected dust particulates back into the storage hoppers or bins. This bin vent is compact in design, easy to install, eliminates ductwork and reduces your installation expense.

APPLICATIONS & USE

Typical Bulk Materials Processed

- Lime
- Soda Ash
- Powder Activated Carbon (PAC)
- Trona
- Fly Ash
- Cement
- Sugar
- Others

Typical Applications

- Moist Agglomerative Dust Applications
- Water Treatment
- Food
- Chemical Processing
- Mining
- Grain Handling
- General Industrial
- Oil and Gas
- Glass and Ceramics
- Pulp and Paper
- Pharmaceutical
- Powder Coating

Applicability can vary by system make and model. For an evaluation, contact us: salesinquiries@carmeuse.com

FEATURES

BENEFITS

Compact, low-profile, top access body design

Eliminates the need for ladders, cages or platforms improving employee safety

Welded housing shipped ready to install

Mounts quickly and offers a durable design providing structural stability

Polyester felt filter bags

Removes particles and minimizes dust emission in the air increasing efficiencies

Sequential timer option mounted in a NEMA 4, 4x, 7, 9 or 12 enclosure

Operates as standalone unit in either indoor/outdoor locations providing flexibility

Easily installed on small gravity-fed storage hoppers, scaling bins, mixers, screws and conveyors

Eliminates ductwork reducing installation expenses

Continuous-duty, on demand sequential pulse cleaning

Provides uninterrupted services and cleans filters reducing maintenance needs

Low energy requirements

Minimizes air usage through cleaning frequency calibration improving efficiencies

Flanged bottom housing design

Makes securing on silos or bins easy and reliable improving safety

SPECIFICATIONS

MATERIAL OF CONSTRUCTION

- **Standard:**
 - Body: A36 Carbon Steel
 - Air Manifold: A53 Carbon Steel
 - Pulse Jet: Aluminum
 - Pulse Jet Seal: Nitrile
 - Filter Media: Polyester Felt Filter Bag
- **Options:**
 - Body: 304 Stainless Steel
 - Air Manifold: 304 Stainless Steel
 - Pulse Jet Seal: Viton

PROCESS REQUIREMENT

- **Air Supply:** Dry and oil-free compressed air
2 SCFM [3.4 m³/h] @ 80 to 120 psig
[552 to 827 kPag]

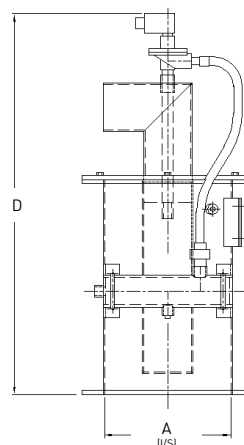
INSTRUMENTATION AND CONTROLS

- **(Optional) Differential Pressure Transmitter:** 4-20 mA HART
- **Discrete Control and Alarm:**
24 VDC / 120 VAC
- **Local Panel / Junction Box Rating:**
NEMA 4, 4X, 7, 9 or 12 [IP66 or 52]
electrical enclosures on all collectors
- **Approvals:** CSA, FM, cULus, CE Marking

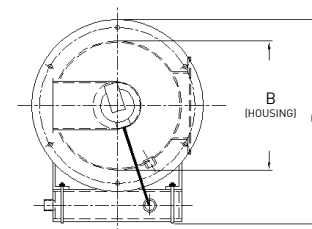
AVAILABILITY

MODEL	A (in. [mm])	B (in. [mm])	C (in. [mm])	D (in. [mm])
BV-1-2	11 ³ / ₄ [299]	12 [305]	19 [483]	35 ¹ / ₂ [902]

ELEVATION VIEW



PLAN VIEW



YOUR LIME HANDLING EXPERTS™

Carmeuse Systems is your trusted partner for designing, integrating, and upgrading lime handling systems. As part of the Carmeuse Group, our teams have unrivaled expertise in understanding the role of lime handling equipment within your operation. From selecting the appropriate raw material, to system engineering, enhancements, and maintenance, our teams provide End-2-End support and guidance. We make complex projects seem simple and help our customers every step of the way. Let's start a conversation, contact us at:

salesinquiries@carmeuse.com
+1-905-875-5587
systems.carmeuse.com

CANADIAN HEAD OFFICE:
8485 PARKHILL DRIVE
MILTON, ON L9T 5E9, CANADA

US HEAD OFFICE:
3600 NEVILLE ROAD
PITTSBURGH, PA 15225

The information contained in this product data sheet is, to the best of our knowledge, true and accurate. As application-specific factors may impact performance, users are advised to evaluate the product independently to determine suitability for the intended application and use conditions. Product availability and specifications are subject to change without notice.

Carmeuse and the Carmeuse logo are registered trademarks of Carmeuse Lime, Inc. © 2024 Carmeuse Systems. All rights reserved. v. 24.03.04