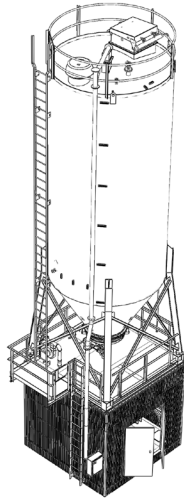


# PRE-ENGINEERED SODA ASH SYSTEM (BOX)



## INTEGRATED SILO, FEED, AND DUST COLLECTION SYSTEM IN A BOX

Our pre-engineered Soda Ash Feed System in a Box provides an integrated solution for receiving, storing, feeding, and delivering over 1900 lb/h of soda ash from truck to the point of application. The three-piece modular design includes a 12 ft. storage silo with a bin vent filter and a slurry make down/storage tank with mixer module on the lower level.

Carmeuse Systems assembles, installs, pipes, wires, and integrates all components through an automated control panel prior to shipment. The pre-insulated modular box is shipped upright on a skid and fits on a conventional truck, minimizing shipping costs. The upper storage silo module is shipped separately for simple connection at site.

### APPLICATIONS & USE

#### Typical Applications

- Water Treatment
- Chemical Processing
- Mining
- Oil and Gas
- Pulp and Paper / Precipitated Calcium Carbonate (PCC)

Applicability can vary by system make and model. For an evaluation, contact us: [salesinquiries@carmeuse.com](mailto:salesinquiries@carmeuse.com)

### FEATURES

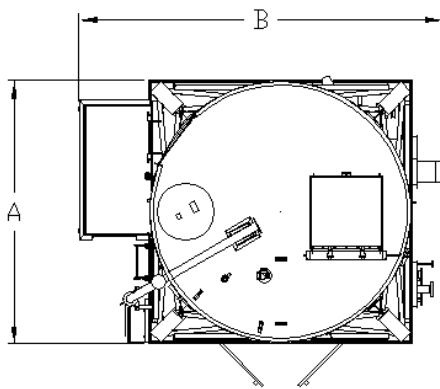
### BENEFITS

Compact "system-in-a box"	Saves money and decreases equipment footprint enhancing plant utilization
Fully engineered and integrated silo, feed, and dust collection system	Receives, stores, feeds, and delivers dry chemicals to application point, optimizing material handling
Pre-assembled, piped, wired and factory tested	Reduces installation costs and time ensuring a seamless start-up
Modular 'plug-and-play' design	Minimizes the amount of onsite assembly required saving on labor costs
12' square (box) footprint	Requires no pilot car to transport with 25% more space than conventional 12' silos
Single-piece welded silo construction (12'-0" diameter)	Ships preassembled limiting the amount of onsite construction needed
Low-profile, top access, bin vent filter mounted on roof	Minimizes dust emissions improving air quality and employee safety
Skirted interior lighting, ventilation, heating and insulation	Use in cold temperature regions provides flexibility in using similar systems across multiple locations
Complete automatic control system with PLC	Improves productivity limiting downtime adding value to the bottom line
Slurry make down/storage tank with mixer	Combines dry chemical and water, storing solutions at the desired concentration
Equipment module shipped up-right	Reduces the chance for damage during shipment for faster installation and start-up

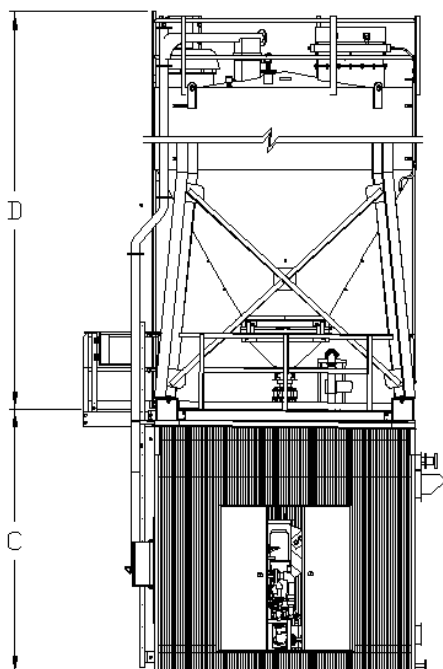
## AVAILABILITY

	A (in. [mm])		B (in. [mm])		C (in. [mm])	
<b>Mixing System</b>	144	[3658]	200	[5080]	145 1/2	[3696]

## PLAN VIEW



## ELEVATION VIEW



### BASIC SILO COMPONENTS

- Storage Silo c/w Truck Fill Line and Pressure/Vacuum Relief Manway
- OSHA Ladder c/w Safety Climbing Protection System
- Bin Vent Filter
- Fluidization System
- Bin Activator

### ROOF MODULE

- Isolation Knife Gate
- Volumetric Feeder
- Forced Draft Wet Scrubber Blower

### LOWER MODULE

- Mixing Tank
- Mixing Tank Agitator
- Forced Draft Wet Scrubber
- Slurry Transfer Pumps or Solution Dosing Pumps
- Piping Spools for Air, Water and Slurry / Solution Tie-Ins
- Lighting, Ventilation, Heating and Insulation
- Main PLC Control Panel
- Silo Fill Panel
- Motor Starter Panel

**NOTE:** Information / dimensions shown are for reference only and is subject to change based on final design and applications.

D (in. [mm])

**Silo Storage Capacity**

2800 ft <sup>3</sup> [79.3 m <sup>3</sup> ]		3600 ft <sup>3</sup> [101.9 m <sup>3</sup> ]		4200 ft <sup>3</sup> [118.9 m <sup>3</sup> ]		4800 ft <sup>3</sup> [130.3 m <sup>3</sup> ]	
465	[11811]	501	[12726]	537	[13640]	573	[14555]

**SPECIFICATIONS**

**SODA ASH SYSTEM**

- **Storage Silo Capacity:** 2,800 to 4,800 ft<sup>3</sup> [79 to 136 m<sup>3</sup>]
- **Soda Ash Throughput:** 1980 lb/h [36 ft<sup>3</sup>/h @ 55 lb/ft<sup>3</sup>]
- **Solution Concentration:** Up to 5%
- **Storage Tank Capacity:** 587 USgal [2.2 m<sup>3</sup>]
- **Dosing Pumps:** Up to 9 USgpm [2 m<sup>3</sup>/h] at 50 ft [15.2 m] TDH
- **Electrical and Instrumentation Approval:** CSA, FM, <sub>C</sub>UL<sub>US</sub>, CE Marking
- **Process / Utility Requirements**
  - Mixing Water: Soda Ash: 41 USgpm [9.1 m<sup>3</sup>/h] at 40 psig [276 kPag]
  - Electrical Load: 38 kW (3Ø) and 7.2 kW (1Ø)
  - Instrument Air: Dry, oil-free, 67 CFM [114 m<sup>3</sup>/h] at 100 psig [690 kPag]

**OPTIONS**

- Upgrade primary equipment's material of construction to 304 or 316 Stainless Steel
- Air compressor module – to supply compressed air to equipment/instrument in the systems

**MATERIAL OF CONSTRUCTION / PAINT SPEC**

- **Storage Silo:**
  - Material: Carbon Steel
  - Surface Preparation: SSPC SP6
  - Exterior:
    - Primer: Sierra Paint, solvent based enamel
    - Finish: Sierra Paint solvent based enamel, 2-3 mils DFT
    - Finish Color: RAL 7038 Grey or RAL 9010 White
- **Slurry / Solution Tank and Modular Structural Box:**
  - Material: Carbon Steel
  - Surface Preparation: SSPC SP6
  - Exterior:
    - Primer: Carboline Carboguard 635 VOC, 3-5 mils DFT
    - Finish: Carboline Carboxane 2000, 5-7 mils DFT
    - Finish Color: RAL 7012 Basalt Grey or RAL 9003 White
- **Tank Mixer:**
  - Material (shaft and impeller): 304 Stainless Steel
- **Slurry Pump:**
  - Material (casing and impeller): Cast Iron with High Chrome
- **Solution Pump:**
  - Material: (body) Cast Iron, (hose) NBR
- **Piping:**
  - Instrument Air: Galvanized Carbon Steel (interior), 304/304L Stainless Steel (exterior)
  - Water Piping: Galvanized Carbon Steel
  - Slurry: Chlorinated Polyvinyl Chloride (CPVC)
  - Solution: PVC



## YOUR LIME HANDLING EXPERTS™

Carmeuse Systems is your trusted partner for designing, integrating, and upgrading lime handling systems. As part of the Carmeuse Group, our teams have unrivaled expertise in understanding the role of lime handling equipment within your operation. From selecting the appropriate raw material, to system engineering, enhancements, and maintenance, our teams provide End-2-End support and guidance. We make complex projects seem simple and help our customers every step of the way. Let's start a conversation, contact us at:

**[salesinquiries@carmeuse.com](mailto:salesinquiries@carmeuse.com)**  
**+1-905-875-5587**  
**[systems.carmeuse.com](http://systems.carmeuse.com)**

**CANADIAN HEAD OFFICE:**  
8485 PARKHILL DRIVE  
MILTON, ON L9T 5E9, CANADA

**US HEAD OFFICE:**  
3600 NEVILLE ROAD  
PITTSBURGH, PA 15225