

# ZMI PORTEC DETENTION LIME SLAKER



## THE EFFICIENT LIME SLAKING SOLUTION

The ZMI Portec Detention Slaker from STT slakes quicklime (particle size up to ¾") and produces slurry with up to 30% solids. This solids concentration allows any lime added to the slaker to be quickly mixed eliminating hot spots from forming. Our detention slaker produces a highly reactive lime slurry to meet your application needs and maximizes your lime usage.

## WHY USE THE ZMI PORTEC LIME SLAKER FROM STT?

- **Safe** – Horizontal agitator breaks the slurry surface preventing dangerous lime 'cap' formation
- **Automated** – Responds to changes in lime quality and feed rate via an integrated automated control system
- **Versatile** – Slakes pebble, as well as fine lime up to ¾" and handles water with moderate impurity levels without issues
- **Efficient** – Vigorous agitation of slaking chamber ensures no dead spots optimizing lime usage

*STT operates as a wholly owned subsidiary of Carmeuse, a leading manufacturer of lime, limestone and mineral-based products.*

## FEATURES

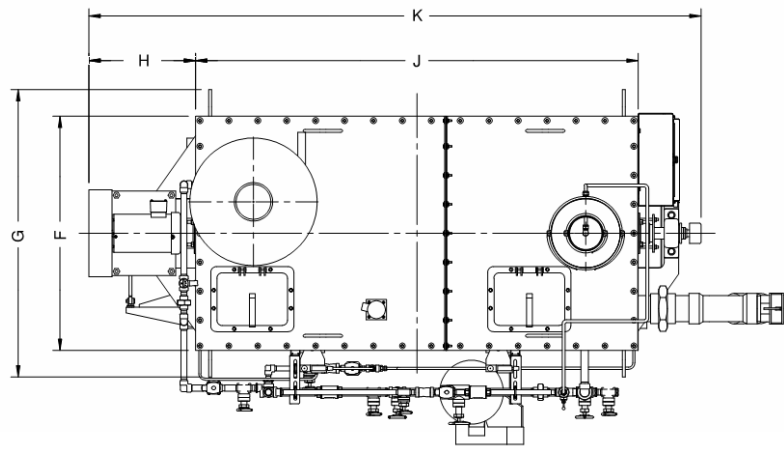
## BENEFITS

Horizontal rake type agitator	Ensures complete mixing of water and lime, preventing hot spots and maximizing lime usage
External water jacket	Preheats incoming water reducing the need for pre-heaters saving on energy costs
Round shape of the barrel bottom	Turns over lime due to paddles' close contact with side walls ensuring thorough mixing
Wetting bowl	Creates a water curtain around the dry feed stream preventing lime buildup and upstream plugging increasing efficiency
Forced draft wet scrubber	Removes dust and steam saving money on wasted lime and maintenance
Stub shaft to agitator shaft connection	Reduces seal packing wear, extending shaft life and decreasing replacement costs
Efficient solids and grit handling	Minimizes settling resulting in a high reactive slurry
Slaking chambers separated by baffles	Prevents lime short circuiting ensuring fully slaked lime at the outlet
Wear liner in slaking zones	Protects the life of the slaking body and is replaceable extending the slaker life cycle
External agitator shaft bearings	Minimizes wear and tear due to no contact with lime slurry extending product life
Asymmetric packing type seal arrangement	Reduces seal leaks and extends the shaft life improving safety and saving money
PLC control system option	Provides a safe and trouble-free operation maximizing productivity

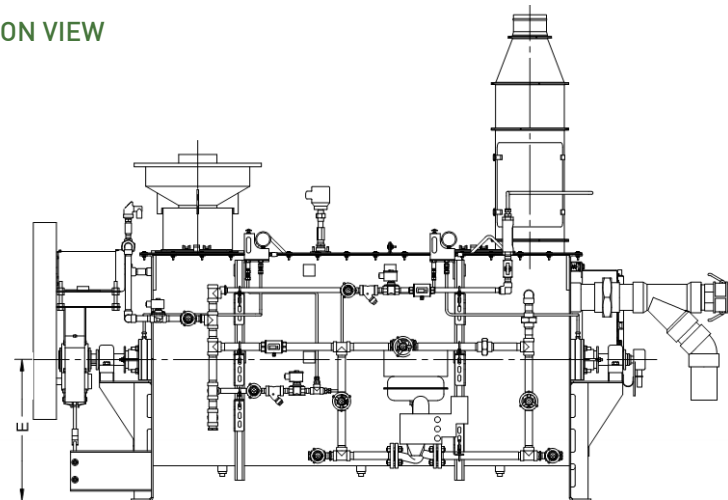
## ZMI PORTEC MODEL AVAILABILITY

MODEL	CaO (lbs./h [kg/h])		A (in. [mm])		B (in. [mm])		C (in. [mm])		D (in. [mm])		E (in. [mm])		F (in. [mm])		G (in. [mm])		H (in. [mm])		J (in. [mm])		K (in. [mm])		Drive (HP [kW])		Volume (US gal [L])	
<b>M-5</b>	1000	[454]	8 1/2	[216]	37	[940]	78 1/2	[1994]	27	[686]	20 1/2	[521]	36	[915]	42 1/2	[1080]	14 1/2	[369]	41	[1042]	65 1/2	[1664]	1.5	[1.1]	90	[340]
<b>M-15</b>	2500	[1134]	9 1/2	[242]	43	[1093]	84	[2134]	36 1/2	[928]	24 1/2	[623]	40 1/2	[1029]	49 1/2	[1258]	18 1/2	[470]	76 1/2	[1944]	106	[2693]	2	[1.5]	210	[790]
<b>M-25</b>	5500	[2495]	17	[432]	65 1/2	[1664]	107	[2718]	43 1/2	[1105]	39 1/2	[1004]	55 1/2	[1410]	66	[1677]	22	[559]	82	[2083]	115 1/2	[2934]	5	[3.7]	450	[1700]
<b>M-40</b>	9000	[4082]	17	[432]	73	[1855]	120 1/2	[3061]	52	[1321]	43	[1093]	65	[1651]	74 1/2	[1893]	32 1/2	[826]	99	[2515]	143	[3633]	7.5	[5.6]	720	[2730]
<b>M-55</b>	12500	[5670]	17	[432]	73	[1855]	114 1/2	[2909]	52 1/2	[1334]	43	[1093]	65	[1651]	74 1/2	[1893]	32 1/2	[826]	108	[2744]	151 1/2	[3849]	10	[7.5]	990	[3750]
<b>M-60</b>	16000	[7257]	16	[407]	73	[1855]	119 1/2	[3036]	54	[1372]	43	[1093]	65	[1651]	74 1/2	[1893]	29	[737]	129	[3277]	172	[4369]	15	[11.2]	1360	[5150]
<b>M-90</b>	26000	[11793]	14 1/2	[369]	76	[1931]	123 1/2	[3137]	55 1/2	[1410]	43	[1093]	70	[1778]	80	[2032]	33 1/2	[851]	168	[4268]	216	[5487]	20	[14.9]	1950	[7380]

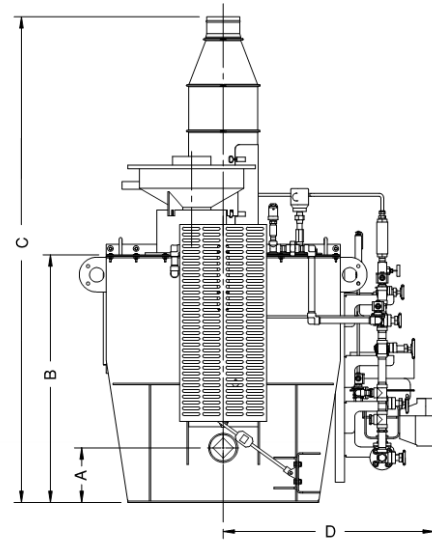
PLAN VIEW



ELEVATION VIEW



SIDE VIEW



**NOTE:** Information / dimensions shown are for reference only and is subject to change based on final design and applications.

### SPECIFICATIONS

#### PROCESS REQUIREMENT

- **Calcium Oxide:** Min 75% CaO available
- **Feed Particle Size:** Max. 3/4" [19 mm]
- **Water Supply:** Min. pressure of 40 psig [276 kPag]

#### ANCILLARIES

- Water Piping Manifold
- Wetting Bowl
- Forced Draft Wet Scrubber

#### MATERIAL OF CONSTRUCTION

- **Standard:**
  - Body: A36 / A1011 Carbon Steel
  - Stub Shaft: 17-4 Stainless Steel
  - Agitator: Abrasion Resistance Steel AR400BH
  - Water Piping Manifold: A53 Galvanized Steel piping and brass / bronze valves
  - Wetting Bowl: A36 / A1011 Carbon Steel
  - Wet Scrubber: 304 Stainless Steel
- **Options:**
  - Body: 304 Stainless Steel
  - Water Piping Manifold: 304 Stainless Steel piping and valves
  - Wetting Bowl: 304 Stainless Steel

#### INSTRUMENTATION AND CONTROLS

- **Temperature and Flow Control:** 4-20 mA HART
- **Discrete Control and Alarm:** 24 VDC / 120 VAC
- **Local Panel / Junction Box Rating:** NEMA 4X 304SS [IP66]
- **Approvals:** CSA, FM, cULus, CE Marking

#### COATING (FOR CARBON STEEL CONSTRUCTION)

- **Surface Preparation:** SSPC-SP 6 Commercial Blast Cleaning / NACE No.3 [ISO 8501 Sa 2]
- **Primer:** Carboline Carbomastic 615, 3-4 mil [75 to 100 µm] DFT
- **Finish:** Carboline Carboxane 2000, 3-4 mil [75 to 100 µm] DFT
- **Finish Color:** RAL 9003 Signal White (Other colors available upon request)
- **Corrosivity Category:** (ISO 12944) C3 High and C4 Medium



**STORAGE & TRANSFER**  
TECHNOLOGIES

MEMBER OF CARMEUSE GROUP

OUR NAMES HAVE CHANGED. **OUR COMMITMENT TO QUALITY REMAINS.**



## IMPORTANT NOTICE

*The information contained in this product data sheet is, to the best of our knowledge, true and accurate. As application-specific factors may impact performance, users are advised to evaluate the product independently to determine suitability for the intended application and use conditions. Product availability and specifications are subject to change without notice.*

## LET US HELP PROVIDE A SOLUTION FOR YOUR NEEDS.

STT is the expert in handling lime that designs, installs, and maintains systems to achieve peak performance for your application so that you are confident that your operations will run more efficiently. As a member of the Carmeuse Group, we are knowledgeable in lime, have over 50+ years of diverse experience, offer state-of-the-art products, and partner with customers throughout the lifecycle of their system and equipment. To speak with one of our experts, contact us at:

**SALES@STTSYSTEMS.COM**

**+1-905-875-5587 • STTSYSTEMS.COM**

**CANADIAN HEAD OFFICE:**  
8485 PARKHILL DRIVE  
MILTON, ON L9T 5E9, CANADA

**US HEAD OFFICE:**  
3600 NEVILLE ROAD  
PITTSBURGH, PA 15225



STT and the STT logo are registered trademarks of Storage & Transfer Technologies, Inc. Carmeuse is a registered trademark of Carmeuse Lime, Inc. © 2022 Storage & Transfer Technologies, All rights reserved. v2022.03.25